


PWC KIT - Wakeboard-Gepäckträger - GTI und GTS 2011-2019, RXT und GTX 2010-2017

Produkt: **Sea-Doo_watercraft**
 Projekt Nein: **487803547**
 Anleitung P/N: **487803547**
 Überarbeitung Nr:
 Änderungsdatum:
 Abgedeckter Artikel: **Wakeboard-Rack - GTI und GTS (2011-2019), RXT und GTX (2010-2017)**

Die folgenden Symbole können in diesem Dokument verwendet werden:

WARNUNG

Weist auf eine gefährliche Situation hin, die zum Tod oder zu schweren Verletzungen führen kann, wenn sie nicht vermieden wird.

 **VORSICHT:** Weist auf eine Gefahrensituation hin, die, wenn sie nicht vermieden wird, zu leichten oder mittelschweren Verletzungen führen kann.

HINWEIS Weist auf eine Anweisung hin, deren Nichtbeachtung zu schweren Schäden an Fahrzeugkomponenten oder anderem Eigentum führen kann.

WARNUNG

- Aus Sicherheitsgründen muss dieses Kit von einem autorisierten BRP-Händler installiert werden.
- Dieses Kit ist nur für bestimmte zutreffende Modelle ausgelegt (autorisierte BRP-Händler bestätigen die Modelle). Es wird nicht für andere Geräte als das (die) empfohlen, für die es verkauft wurde.
- Sollte bei der Demontage/Montage das Entfernen einer Verriegelung (z. B. Sicherungsglaschen, selbstsichernde Verschlüsse etc.) erforderlich sein, immer durch eine neue ersetzen.
- Die Anzugsvorgaben für Drehmomentschlüssel müssen unbedingt eingehalten werden.
- Tragen Sie immer einen AUGENSCHUTZ UND GEEIGNETE HANDSCHUHE, wenn Sie Elektrowerkzeuge verwenden.

WARNUNG

Einige wichtige Sicherheitsinformationen und/oder Betriebsanweisungen für den Endverbraucher können in diesem Anweisungsblatt enthalten sein. Stellen Sie sicher, dass Sie dem Kunden die Kit-Teilenummer sowie das diesem Kit beiliegende Anleitungsblatt mitteilen. Stellen Sie sicher, dass der Kunde Zugriff auf alle Informationen hat, die für die ordnungsgemäße Verwendung des Zubehörs erforderlich sind.

HINWEIS : VERWENDEN SIE DIE ANZUGSDREHMOMENTE IN DER FOLGENDEN TABELLE, WENN NICHT ANDERS ANGEGBEN.



	GRAD			
	5.8	8.8	10.9	12.9
M4	1,8 ± 0,2 N•m (16 ± 2 lbf• Zoll)	2,8 ± 0,2 N•m (25 ± 2 lbf• Zoll)	3,8 ± 0,2 N•m (34 ± 2 lbf• Zoll)	4,5 ± 0,5 N•m (40 ± 4 lbf• Zoll)
M5	3,3 ± 0,2 N•m (29 ± 2 lbf• Zoll)	5 ± 0,5 N•m (44 ± 4 lbf• Zoll)	7,8 ± 0,7 N•m (69 ± 6 lbf• Zoll)	9 ± 1 N•m (80 ± 9 lbf• Zoll)
M6	7,5 ± 1 N•m (66 ± 9 lbf• Zoll)	10 ± 2 N•m (89 ± 18 lbf• Zoll)	12,8 ± 2,2 N•m (113 ± 19 lbf• Zoll)	16 ± 2 N•m (142 ± 18 lbf• Zoll)
M8	15,3 ± 1,7 N•m (135 ± 15 lbf• Zoll)	24,5 ± 3,5 N•m (18 ± 3 lbf•ft)	31,5 ± 3,5 N•m (23 ± 3 lbf•ft)	40 ± 5 N•m (30 ± 4 lbf•ft)
M10	29 ± 3 N•m (21 ± 2 lbf•ft)	48 ± 6 N•m (35 ± 4 lbf•ft)	61 ± 9 N•m (45 ± 7 lbf•ft)	73 ± 7 N•m (54 ± 5 lbf•ft)

M12	52 ± 6 N•m (38 ± 4 lbf•ft)	85 ± 10 N•m (63 ± 7 lbf•ft)	105 ± 15 N•m (77 ± 11 lbf•ft)	128 ± 17 N•m (94 ± 13 lbf•ft)
M14	85 ± 10 N•m (63 ± 7 lbf•ft)	135 ± 15 Nm (100 ± 11 lbf•ft)	170 ± 20 N•m (125 ± 15 lbf•ft)	200 ± 25 N•m (148 ± 18 lbf•ft)
M16	126 ± 14 N•m (93 ± 10 lbf•ft)	205 ± 25 N•m (151 ± 18 lbf•ft)	255 ± 30 N•m (188 ± 22 lbf•ft)	305 ± 35 N•m (225 ± 26 lbf•ft)
M18	170 ± 20 N•m (125 ± 15 lbf•ft)	273 ± 32 N•m (201 ± 24 lbf•ft)	330 ± 25 N•m (243 ± 18 lbf•ft)	413 ± 47 N•m (305 ± 35 lbf•ft)

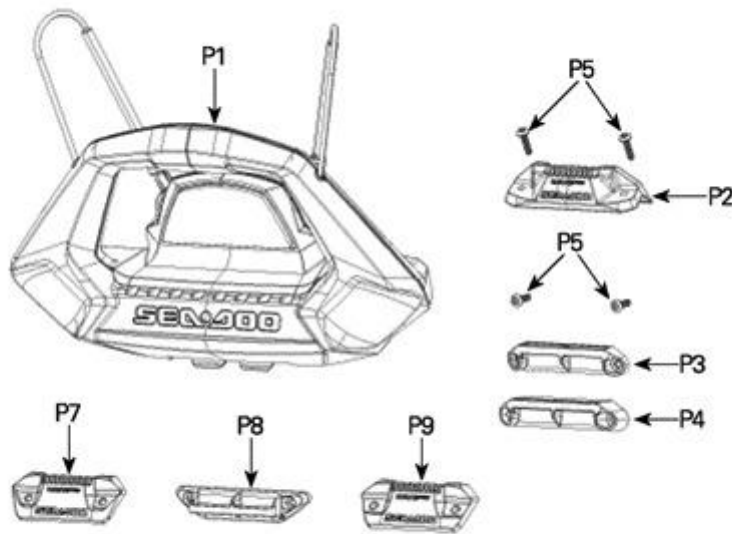
NOTE: The illustrations in this document show typical construction of the different assemblies and may not reproduce the full detail or exact shape of the parts; however, they represent parts that have the same or similar function.

NOTE: Installation time is approximately 0.5 hour.

Required Tools

	Required Tool		Use
T1	Drill bit 5.5 mm (7/32 in)		To drill holes for M6.81 x 25 and M6.81 x 30 Torx screw
T2	Center punch		To punch the center of the holes for M6.81 x 25 and M6.81 x 30 Torx screw

Parts to be installed



items P7 + P8 + P9 are not included in kit

ITEM	DESCRIPTION	Part number	QTY
P1	Board Support Kit	Not Available Separately	1
P2	Upper Anchor	291004675	1
P3	Lower Anchor	291004769	1
P4	Lower Anchor	291005240	1
P5	M6.81 x 30 Torx Screw	250001008	4
P6	Warning Decal (FR) (not shown)	219903229	1

NOTICE Prior to operate the vehicle with the new features, it is of a prime importance to understand the Operator's Guide instructions provided with the vehicle. If this guide is not available on your side, ask to

your dealer to get a free sample.

NOTICE If you have an old platform, the anchors in this kit are not suitable for your watercraft. See the table below to order the non-included correct ones depending on your watercraft.

Models	anchor	Part number	Item
RXT and Wake Pro 2009-2017	Upper	291003582	P7
	Lower	291002864	P8
GTI and GTR 2011-2019	Upper	291003104	P9
	Lower	291002864	P8

INSTRUCTIONS

Upper Anchor Installation

1. Select vehicle side onto which you want to install the wakeboard rack.
2. Measure a distance from the end of the rear bumper, parallel to the top edge of the side bumper. Refer to table for distance and proper support according to model.

Models	Upper support	Measured distance from rear bumper	Item
GTX, RXT and Wake Pro MY17 and older	291003582	636 mm (25 in)	P7
GTI and GTR	291003104	760 mm (30 in)	P9



Upper anchor (P/N 291003582)

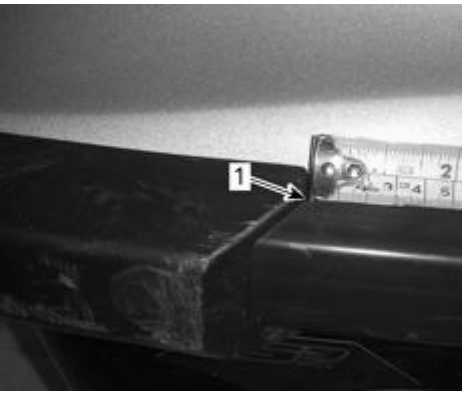


Upper anchor (P/N 291003104)



1. End of rear bumper
2. Measured distance

NOTE: The tape measure should be aligned to be tangent with the rounded end of the rear bumper.



1. Tangent location for measure origin

3. Mark the measured distance on the watercraft deck just above bumper line using a marker.



Measure and mark distance from rear bumper

4. Measure and mark a dot on the deck at a distance of 30 mm (1.18 in) above the preceding location. This mark represents the location of the rear hole.



30 mm offset

5. Measure a second offset of 30 ± 0.5 mm ($1.181 \pm .02$ in) above the bumper at a distance of approximately 75 mm (3 in) further towards the front of the deck.



30 mm offset

6. Draw a line parallel to the bumper and passing through the two points towards the front of the watercraft of at least 115 mm (4.5 in) long.



1. Line parallel to bumper

7. Punch and drill a #3 (5.5mm) diameter hole at the first location marked towards rear of watercraft (rear hole).



Punch and drill hole

8. Install one of the retaining M6.81 x 30 Torx screws [P5] to temporarily affix the appropriate upper anchor [P7] or [P9] to the deck as a centering aid to locate the second hole.

NOTE: Do not torque retaining screw yet.

NOTICE Make sure to use the proper support adapter for your vehicle prior to drilling holes in deck.



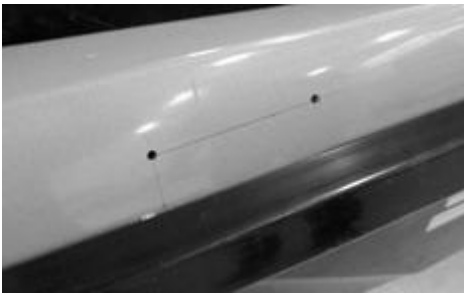
Temporarily affixed upper anchor

9. Punch and drill a #3 (5.5mm) diameter hole on the center line towards the front of the watercraft using the anchor as a template.



Punch and drill hole

10. Clean residues.



Clean residues

11. Apply a bead of CLEAR SILICONE SEALANT (P/N 296 000 309) in each hole.



Apply sealant

12. Install upper anchor. Tighten screws to 6 ± 1 N•m (53 ± 9 lbf•in).



Installed Upper Anchor

Lower Anchor Installation

1. Install lower anchor onto the wake support [P1]. Refer to the following table for distance and proper support according to model.

Models	Lower Anchor	Item
GTX, RXT and Wake Pro MY17 and older	291002864	P8
GTI and GTR	291002864	P8



Lower anchor (P/N 291002864)



A = Lower anchor

B = Wake support

2. Install wake support latch onto the upper anchor.

3. Apply pressure downwards on the wake support so it rests against the bumper of the watercraft.

4. While maintaining pressure, push lower anchor towards hull until it rests against it.

5. Mark a line on the hull around the lower anchor.

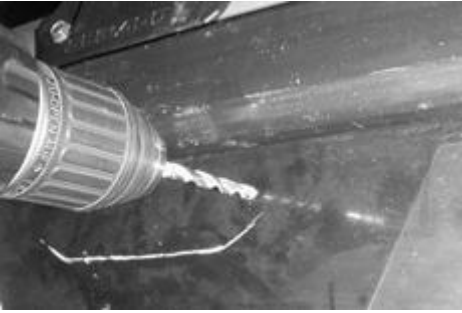


A = Mark a line here

6. Remove the wake support from the upper anchor and remove the lower anchor from the wake support.

7. Reposition the lower anchor to its marked location to use it as a template for drilling.

8. Punch with the center punch [T2] and Drill with the drill bit [T1]. Only on one side.



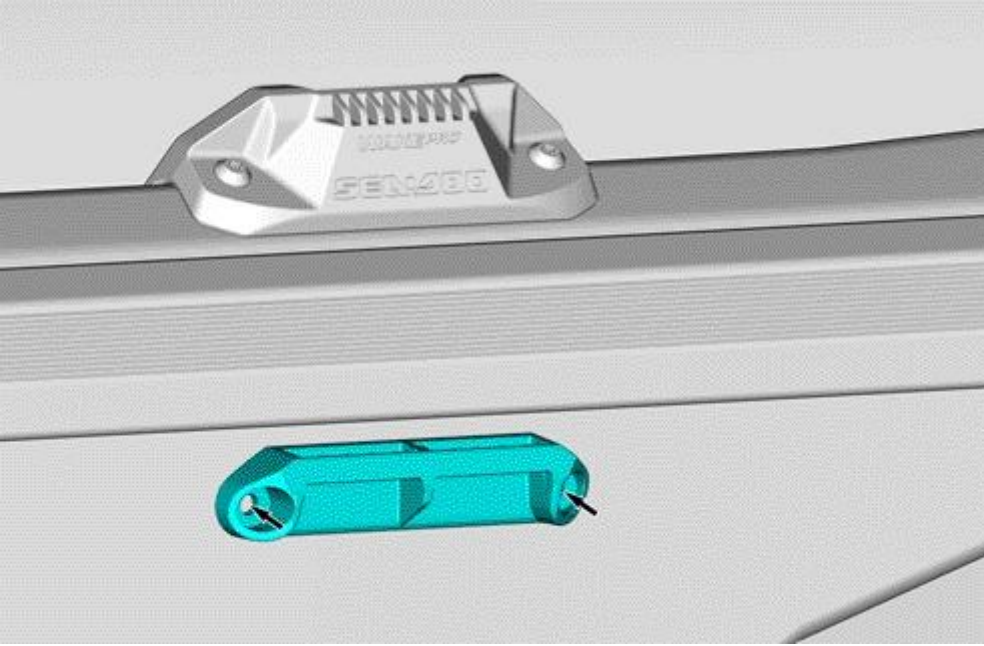
Punch and drill hole

9. Remove debris.

10. Apply a bead of CLEAR SILICONE SEALANT (P/N 296 000 309) in hole.

11. Affix the lower anchor with the first M6.81 x 30 Torx screw [P5].

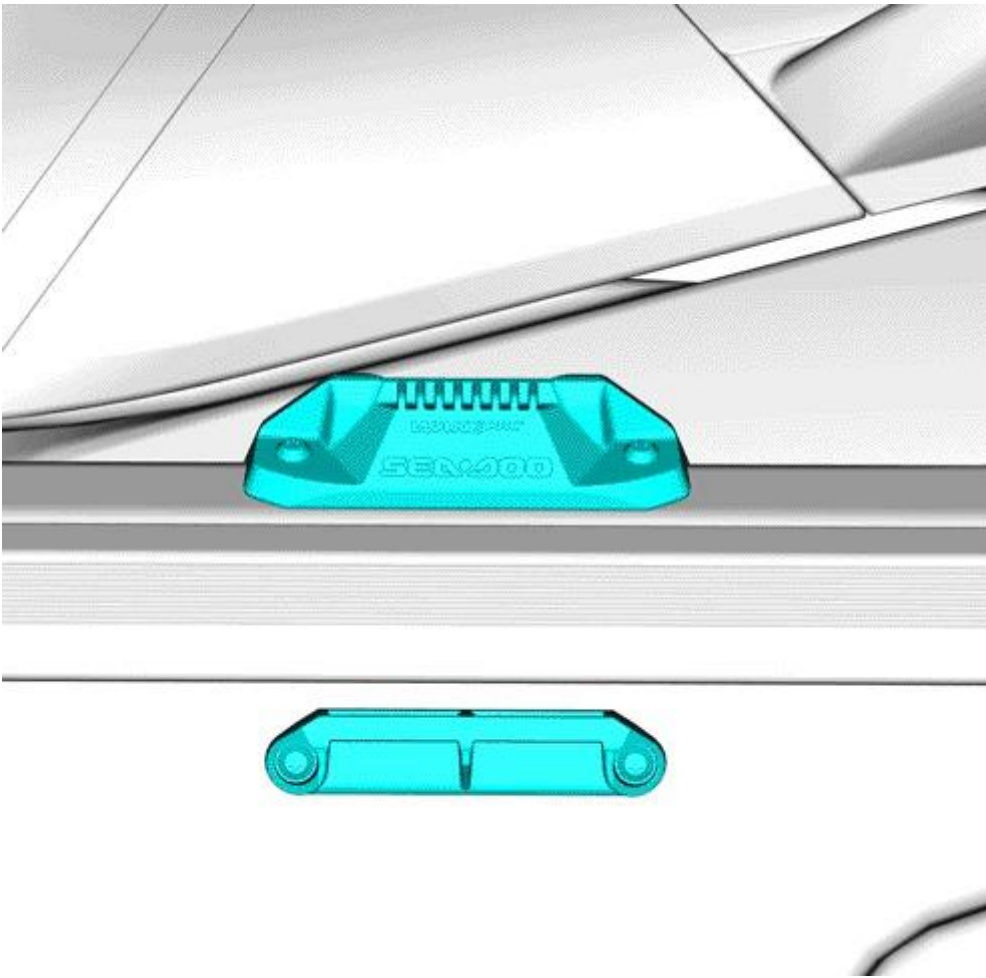
12. Use the lower anchor as a template to punch with the center punch [T2] and drill with the drill bit [T1] the other hole..



13. Remove debris.

14. Apply a bead of CLEAR SILICONE SEALANT (P/N 296 000 309) in each hole.

15. Install lower anchor and tighten M6.81 x 30 Torx screws [P5] .



Both anchors are installed

Tightening Torque

M6.81 x 30 Torx Screw [P5]

4.5 to 5.5 N•m (40 to 49 lbf•in)

Wake Support Installation

1. Install wake support onto lower anchor.

NOTICE Ensure wake support and lower anchor are well engaged together before to rotate the wake support to avoid damage to both parts.



Wake support affixed to lower anchor

2. Rotate wake support upwards and push to snap onto the upper anchor.



Wake support affixed to upper anchor

Warning Label

This product comes with the following, already apposed, English warning label containing important safety information. For the other languages, see with your certified BRP dealer.



WARNING

ALWAYS:

- Secure RACK properly
- Position board with FINS OUTWARD
- Secure BOARD properly



The warning label should be considered permanent part of this product. If the label comes off or becomes hard to read, please contact an authorized dealer for replacement.

Any person who intends to use this product should read and understand the information contained on the warning label before doing so.

Warning Label Installation

1. Install the French warning label [P6] when necessary.

NOTICE Do not apply isopropyl alcohol or solvent directly on labels.

2. To install label, wipe off surface of existing label with a clean dry cloth.
3. Install the warning label.



1. Warning Label